



**A Watch You Can Trust**

**INSTRUCTION MANUAL FOR  
WATCH CALIBRE  
V811**



**WARNING**



**THIS PRODUCT CONTAINS A BUTTON BATTERY**

If swallowed or placed inside any part of the body, the battery can cause severe or fatal injuries within 2 hours or less.

Button batteries are hazardous whether new or used. Keep batteries out of reach of children.

If you think the battery may have been swallowed or placed inside any part of the body, seek immediate medical attention. Contact the Australian Poisons Information Centre immediately on 13 11 26 (New Zealand 0800 764 766) for 24 / 7 fast, expert advice.

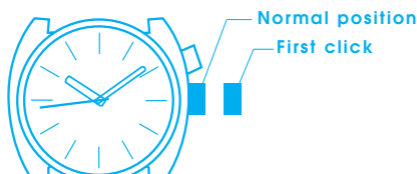
# Instruction Manual

# LORUS

## ANALOGUE QUARTZ

# LORUS

## ■ HOW TO USE NON-CALENDAR MODEL



Pull the crown OUT to the FIRST click and set the time. Then push the crown IN.

Note: When you set the time, first set the minute hand to a properly advanced time, then return the minute hand to the correct time by turning it COUNTERCLOCKWISE.

## ■ HOW TO USE DAY/DATE MODEL

The day of the week can be displayed bilingually (English/another language) and you can select either.

### 1. How to set the day and date



Pull out the crown to the first click position. (The crown of this watch can be pulled out to the second click position.)

Turn the crown and set the previous day and date. (The day and date can be selected alternatively and displayed in English or the other language.) (For Cal. PC33, turn clockwise to set the date only.)

Pull out the crown to the second click position and set the present day and date by turning the minute hand.

### Day setting for Cal. PC33

At the second click position, turn the hands clockwise and counterclockwise repeatedly between 11:15 pm and 3:45 am to select the desired day and language.

Note: Do not attempt to set the day and date between the times of 9:00 pm and 4:00 am as this may cause the day and date displays to change out of sequence.

### 2. How to set the time



Pull out the crown to the second click position and the second hand stops. The second hand should be stopped on 12 o'clock position.

Turn the crown and set the desired time.

Push the crown in to the normal position in accordance with a time signal.

- Be sure to check that the AM/PM is correctly set. (The day and date are designed to change once every 24 hours.)
- To adjust the correct time for a quartz watch, it is necessary to advance the minute hand 4 or 5 minutes ahead of the correct time and then turn it counterclockwise to set the designated time.

## ■ LUMIBRITE WATCH

\* If your watch is a LORUS LUMIBRITE watch, it has following features.

LORUS LUMIBRITE watches absorb and store light energy from natural and artificial light sources and emit light in the dark. They are made of environmentally friendly material, and therefore, are harmless to human beings and the environment.

- With a full charge, LORUS LUMIBRITE watches glow in the dark hours longer than conventional luminous watches of this type. If exposed to a light of more than 500 lux (i.e., the brightness of a typical office) for approximately 10 minutes, or direct sunlight for 2 minutes, they will glow for hours.
- Since LORUS LUMIBRITE watches emit the light they store, the brightness will decrease gradually over time. The length of time they will glow may also differ slightly depending on such factors as the brightness of and distance from the light source used to charge the watch.


## ■ BATTERY CHANGE

As the battery is inserted at the factory to check the function and performance of the watch, its actual life once in your possession may be less than the specified period.

Be sure to replace the battery to prevent any possible malfunction as soon as it runs down. To replace the battery, we recommend taking the watch to a local watch retailer.

## ■ CARE OF YOUR LORUS WATCH

### • BATTERY

	<b>CAUTION</b>
<b>Do not expose the old battery to fire or recharge it. Keep it at a place beyond the reach of children. If a child swallows it, consult a doctor immediately.</b>	

### • WATER RESISTANT

Condition of use Indication on the dial/ case back	Accidental contact with water, such as splashes and rain	Swimming and taking a shower	Skin diving	Scuba diving
<b>No Indication</b>	NO	NO	NO	NO
<b>WATER RESISTANT</b>	YES	NO	NO	NO
<b>WATER RESISTANT* (50M/5 BAR)</b>	YES	YES	NO	NO
<b>WATER RESISTANT* (100M/10 BAR) or above</b>	YES	YES	YES	NO

\* If your watch is 200 M/20 BAR, 100 M/10 BAR or 50 M/5 BAR water resistant, it is so indicated on the dial/case back.

- Do not press the buttons or turn the crown when the watch is wet.
- If the watch is exposed to salt water, rinse it in fresh water and then wipe it thoroughly dry.

### Caution:

Leather straps are not water resistant except so indicated, even if the watch head is water resistant.

### • ALLERGIC REACTION

Because the case and band touch the skin directly, it is important to clean them regularly. If not, shirt sleeves may be stained and those with delicate skin may develop a rash. Please wear the watch with some play to avoid any possible allergic reaction. If you develop a rash on your wrist, stop wearing and consult a physician.

### • MAGNETISM

Your watch will be adversely affected by strong magnetism. Keep it away from close contact with magnetic objects.

### • SHOCKS AND VIBRATIONS

Your watch may be worn for normal sports activities, but be careful not to drop it or hit it on hard surfaces.

### • TEMPERATURE

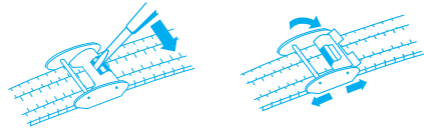
Your watch is preadjusted so that constant accuracy may be insured at normal temperature.

## ■ SERVICE

When your LORUS watch requires repair or servicing, please see the enclosed WARRANTY/GUARANTEE.

## ■ HOW TO ADJUST BAND LENGTH

### Sliding clasp band



1. Pry up the adjusting flap with a small screwdriver or something with a sharpened tip.
2. Slide the clasp to adjust it to a desired size.
3. The grooves on the Back side of the bracelet should fit into the convex portion on the clasp, then, close the adjust flap.

### ● Wrong method

If you do this way, the adjusting flap may be destroyed.

